

More Advanced Textile RIP Software for Professional Use with New Functions

TxLink4™



- TxLink4 Professional** All functions such as "Color Combine" are included
- TxLink4 Standard** Optimizing digital textile print production
- TxLink4 Lite** Entry model with selected practical functions

Image add-on function You can add logos, seam allowance, barcode, etc. There is no need for editing on design software.



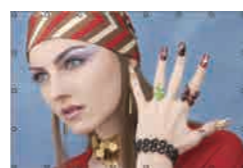
Caption
File name or comment added below the image



Label
Text added on the image



Logo
User's default logo added



Eyelet hole
Round marks added at equal spaces



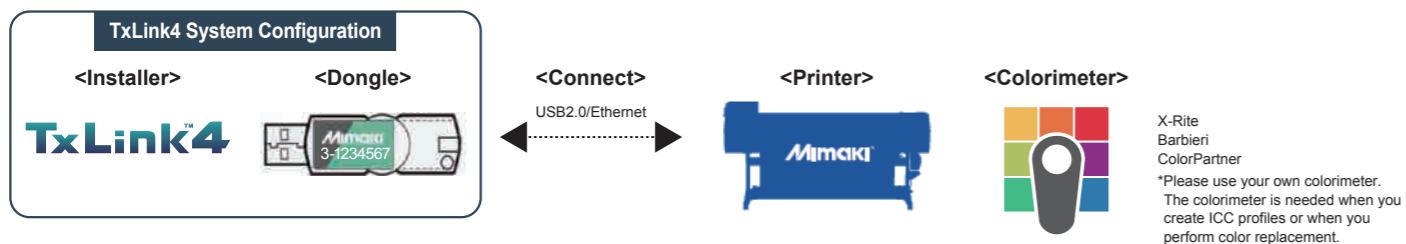
Seam allowance
Seam allowance added around the image



Ruler



Barcode



Supported printer

Model name	Lite	Standard	Professional
TSS5-1800			
TS300P-1800			
TX300P-1800/1800B	✓	✓	✓
JV150/CJV150 Series			
JV300/CJV300 Series			
TS500-1800			
TS500P-3200			
TX500-1800B			
TX500-1800DS		✓	✓
TX500P-3200DS			
Tiger-1800B MkII			
MM700-1800B			

Readable data format

PS, EPS, AI, PDF, JPEG, BMP, PNG, TIFF, PSD

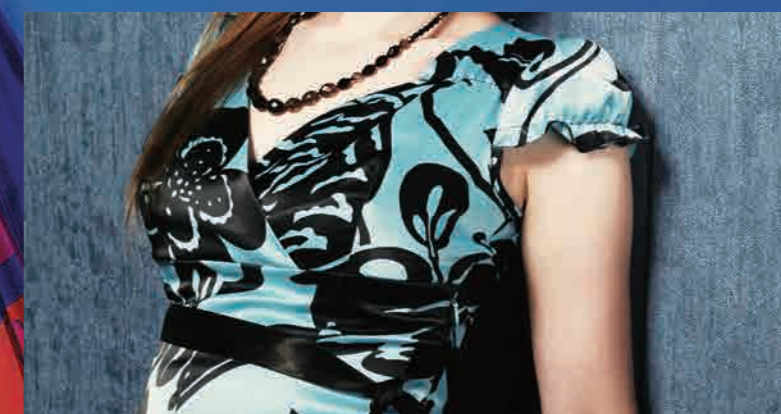
Hardware requirements

Item	Minimum requirement	Recommended requirement
OS	Windows 7 (64bit) SP1 or later Windows 8 (64bit) Windows 8.1 (64bit) Windows 10 (64bit)	Windows 10 Pro (64bit)
CPU *1	Intel Core i5 (2.8GHz)	Intel Core i7-7700K (4.2GHz) or higher
Chip set	Intel genuine chip set	
Memory	4GB	8GB or more
Required HDD space	500GB	500GB SSD x 2 units or more
Interface	Ethernet *2 / USB2.0 *3	
Optical drive	CD-ROM readable optical drive *4	
Display	1,600 x 900 pixels	1,920 x 1,200 pixels or more

*1: At least a CPU with 4 physical cores is required.
*2: Necessary for authorization and for connecting a printer with TCP/IP port.
*3: Necessary for connecting the dongle and for connecting a printer with USB2.0 port.
*4: This is required to install TxLink4 software.

More Advanced Textile RIP Software for Professional Use

TxLink4™



●Some of samples in this catalogue are artificial renderings. ●Specifications, design and dimensions stated in this catalogue may be subject to change without notice for technical improvements etc. ●The corporate names and merchandise names written in this catalogue are the trademark or registered trademark of the respective corporations. ●The specifications described in this catalogue are as of April 2019.

Mimaki MIMAKI ENGINEERING CO., LTD.
2182-3 Shigeno-Otsu, Tomi-city, Nagano 389-0512, Japan
TEL: +81-268-64-2281

Mimaki Global Network

- USA MIMAKI USA, INC.
- Brazil MIMAKI BRASIL COMERCIO E IMPORTACAO LTDA
- India MIMAKI INDIA PRIVATE LIMITED
- Taiwan MIMAKI ENGINEERING (TAIWAN) CO.,LTD.
- Singapore MIMAKI SINGAPORE PTE. LTD.
- Europe MIMAKI EUROPE B.V.
- Indonesia PT. MIMAKI INDONESIA
- Australia MIMAKI AUSTRALIA PTY. LTD.
- China SHANGHAI MIMAKI TRADING CO.,LTD.
- Thailand MIMAKI (THAILAND) CO.,LTD.

More Advanced Textile RIP Software for Professional Use with New Functions

"TxLink3" textile RIP software has evolved by becoming more sophisticated and user-friendly. TxLink4's useful new functions include "parallel RIP" and "load balancing" to increase production efficiency, "16-bit rendering" to maximize beauty, and "variable print" to allow you to handle production of made-to-order team uniforms. With TxLink3's superior functions such as "color replacement", "step & repeat" and "multicolor profile creation" still available, the TxLink4 RIP software specializes in digital textile production.

Three editions to choose from:

- TxLink4 Professional** All functions such as "Color Combine" are included
- TxLink4 Standard** Optimizing digital textile print production
- TxLink4 Lite** Entry model with selected practical functions

New! "Parallel RIP / "Load balancing" functions / "16-bit rendering"

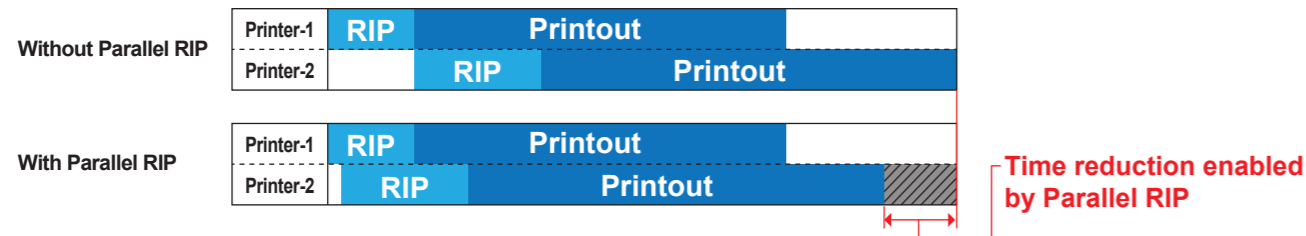
Parallel RIP / Load balancing functions improve production efficiency, and 16-bit rendering realizes smoother gradation expression.

Parallel RIP function

Parallel RIP improves the utilization rate during continuous printing.

- The RIP processing can be performed in parallel for multiple pieces of print data, and up to 8 jobs can be processed in parallel.
- Printing is also executed in parallel when multiple printers are connected*, which further improves the utilization rate.

*Additional printer licenses corresponding to the number of connected printers are required.

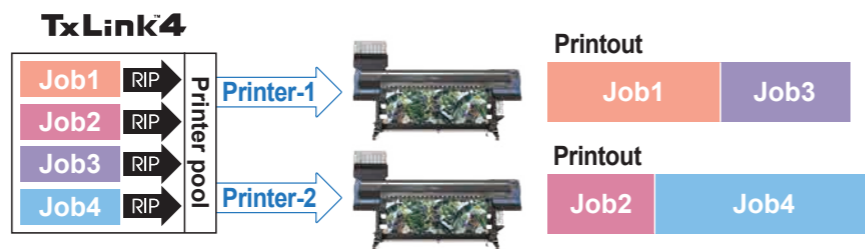


Load balancing function

Print jobs are pooled and automatically allocated^{*1} to multiple printers^{*2}.

- You can execute printing without worrying about the job printing status of each printer.
- When you print a large number of copies, they can be printed at the same time by multiple printers with the same job setting.

*1 Round-robin method
*2 Additional printer licenses corresponding to the number of connected printers are required. Identical printers or identical ink set printers are needed.



16-bit rendering

Rendering expanded from 8-bit to 16-bit enables more beautiful gradation expression.*

*8-bit rendering is used depending on the file format or color space.

TxLink3
8-bit rendering



TxLink4
16-bit rendering

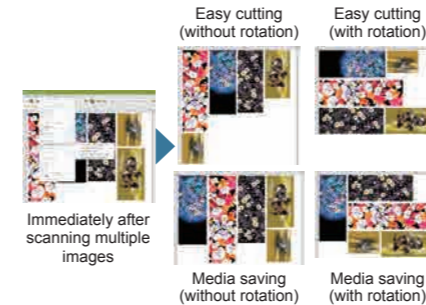


New! Enhanced Functionality

You can easily perform elaborate pagination and efficient data placement depending on your purpose by using enhanced or added functions of the TxLink4.

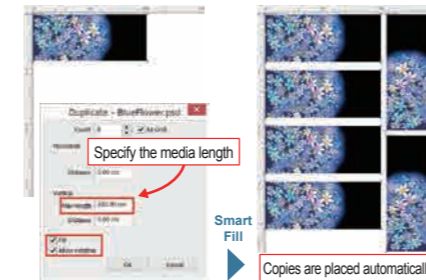
"Simplified pagination (Nesting)"

Multiple pagination algorithms (handling procedures) are employed to enable simple pagination suitable for your purpose.



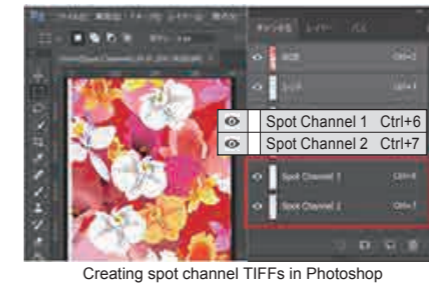
"Optimized copy placement (Smart Fill)"

By only specifying the media length in copy placement, the width is considered, and copies are automatically rotated and placed to fit the space.

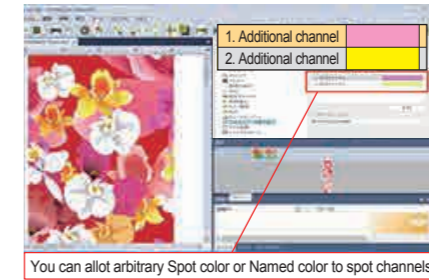


"Allocation of spot colors to spot channels"

It is possible to allot arbitrary Spot color and Named color to spot channels of TIFF and PSD files created by Photoshop. For example, if you allot fluorescent color, color development with high creativity and vividness can be achieved in sublimation transfer.



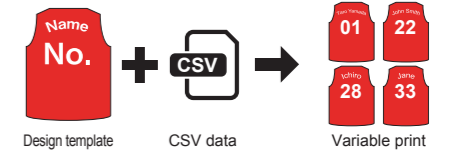
Creating spot channel TIFFs in Photoshop



You can allot arbitrary Spot color or Named color to spot channels.

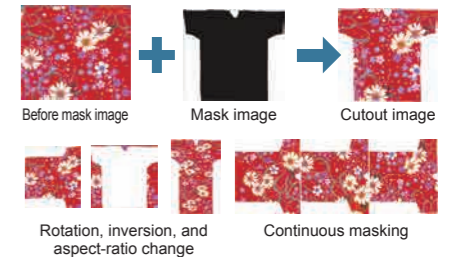
"Variable print function"

Variable data such as uniform numbers and player names can be directly imported from CSV file to create print jobs. Text can also be processed using methods such as text outline fills and arched text layout.



"Image mask"

Masking can be performed with TxLink4 alone without clipping mask by use of Illustrator or similar software. Rotation, inversion, and aspect-ratio change of masked images, and continuous masking to long-sized images, are also possible.



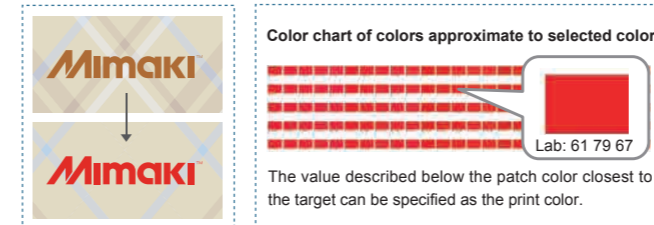
Useful functions succeeded from TxLink3

"Color replacement function"

The TxLink4 allows for color replacement in various data formats: raster data, vector data, CMYK image and RGB image. Your ideal color representation can be realized by specifying the amount of ink or lab values. This function can support a color chart consisting of color patches.

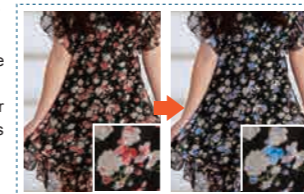
Getting close to your ideal color
When the printed color tone is different from the intended one, it can be converted to get close to more ideal color by using this color replacement function.

Approximate color print function
Approximate colors of the color you have selected from Swatch Books or Named Colors can be printed in a chart. This enables simple color matching to the target color.



Wider color variations enabled by color replacement for raster data

Color scheme critical for textile printing can be changed via a simple RIP operation. Color replacement is available not only for vector data but also for raster data. It allows for various extended variations.

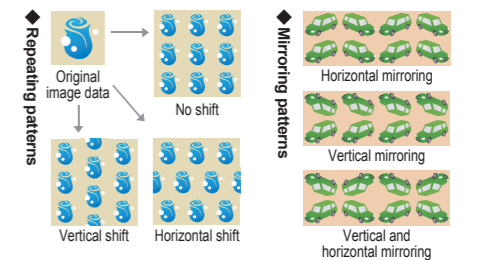


Workflow up to print



"Step & Repeat function"

In the TxLink4, PSD, PNG, JPEG, EPS, PS, PDF and AI have also become available in addition to TIFF and BMP. By tightly arranging small images, a single large image designed with repeating patterns can be created. In addition to the repeating patterns effective for design, mirror patterns can be used.

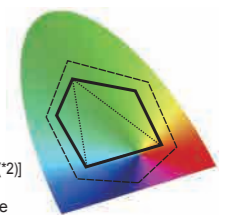


Multicolor profile creation function

A multicolor profile using CMYK and spot color inks (blue, red, orange, etc.) can be created.

The profile can be created automatically by only following the instructions of the wizard to print and measure the color chart (*1). *1 Please use a colorimeter (which should be prepared separately) after color development.

Expression of a wide RGB gamut
Using spot color inks broadens the color gamut range and produces more vivid and beautiful print results.



Multicolor profile creation procedures

